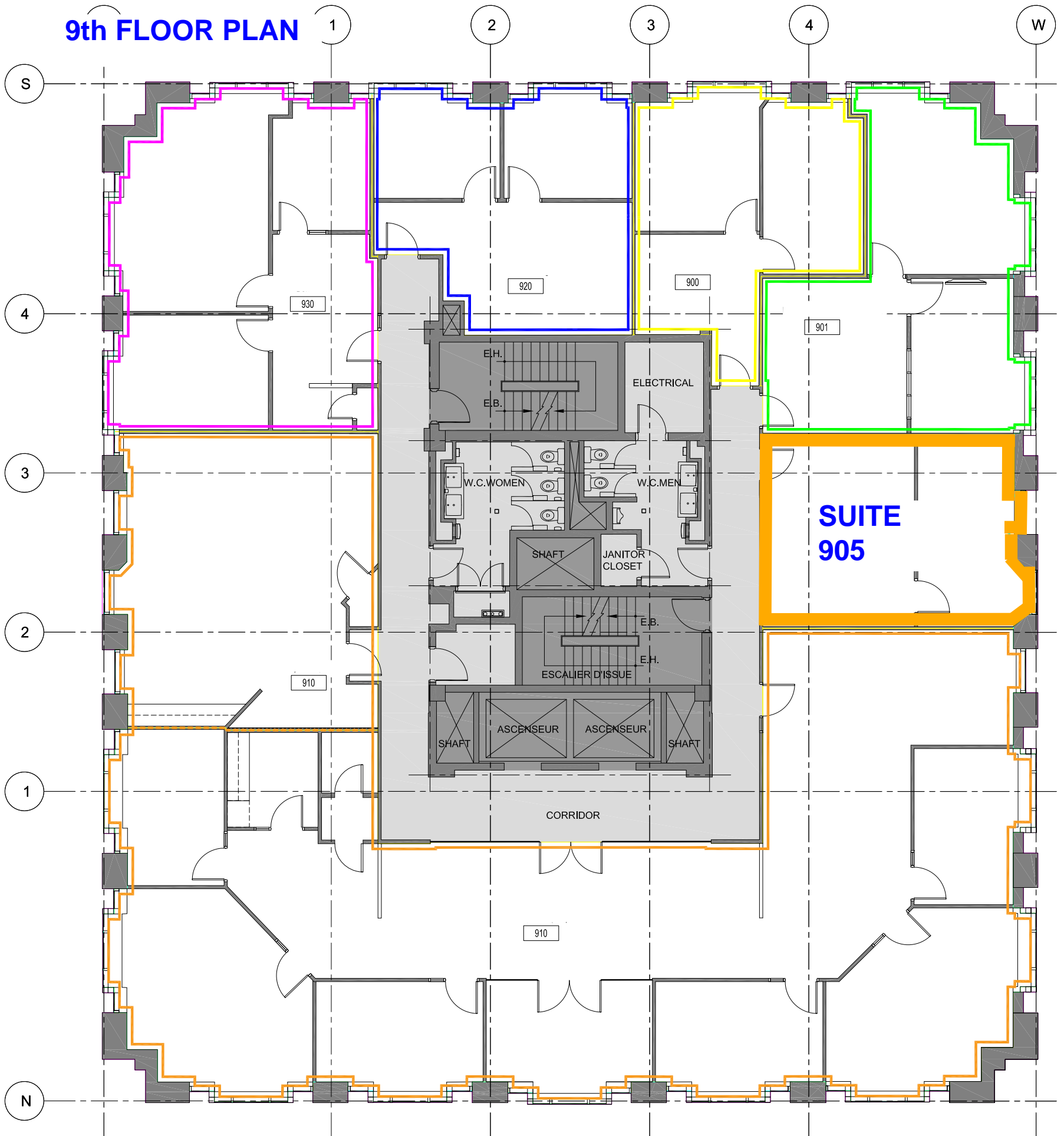


# 9th FLOOR PLAN





A floor plan of a room, labeled '905' in a central box. The room is rectangular with a dashed horizontal line across the middle and a dashed vertical line on the left side. A thick cyan line highlights the perimeter of the room, including a door on the right wall and a door on the bottom wall. A thick green line highlights the top boundary of the room. A thick orange line highlights the bottom boundary of the room. The room contains a door on the right wall and a door on the bottom wall. There are also some grey shaded areas on the right side of the room, possibly representing structural elements or furniture. The number '905' is centered in a white box with a black border.

905