






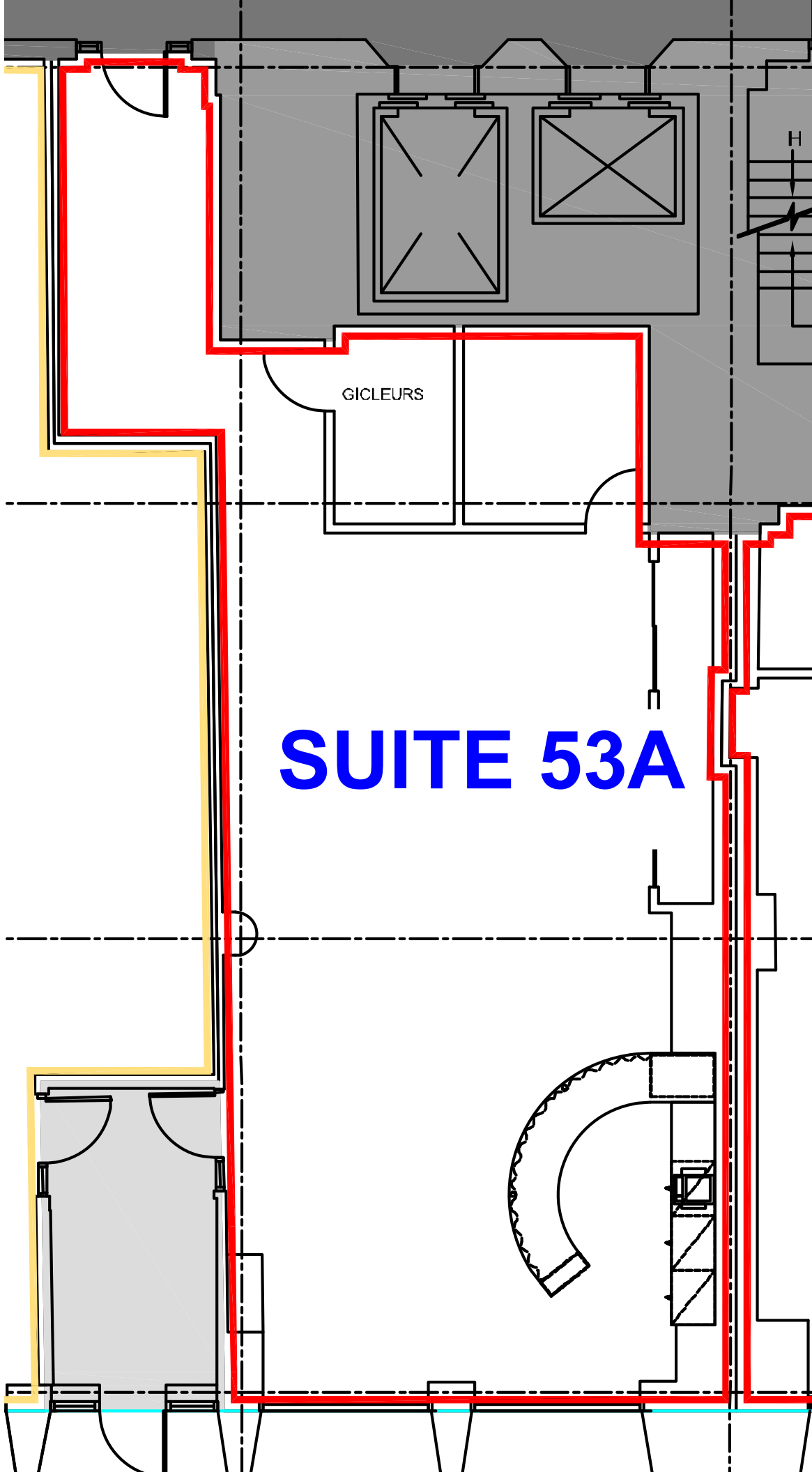
# STREET LEVEL FLOOR PLAN



## SUPERFICIES GÉNÉRALES

R de C

	Superficie bâtie	31 099 p.c.
	Superficie brute	27 920 p.c.
	Vide technique	1 660 p.c.
	Superficie commune d'immeuble	6 604 p.c.
	Superficie commune d'étage	123 p.c.



**SUITE 53A**

GICLEURS

H